



**EPIC HRMS™**  
**Improving Business Profitability**  
**Through Integrated Employee Performance Management**

# Sound Familiar?...

## Questions Many Executives are Asking...

- How can the efficiency of HR programs be improved?
- How can we deliver better HR services without increasing costs?
- Can we use our existing investment in HR technology more effectively?
- Do we need an enterprise HR system to support enterprise HR?
- Should we consider outsourcing some aspects of HR?
- How should/could we use the Web to deliver HR services more effectively?

## But, most of all...

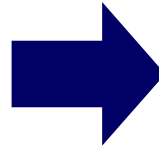
- How can we increase work force productivity?
- How can we use HR Programs to increase profitability?
- How can we do it smartly and get superior ROI?
- Who can we Partner with that has done this before?
- Where do we start?
- What does the road map look like?



# A Brief Welcome & Introduction...

***“At EPIC Software™ we Focus on Lowering Capital and Operational Expenses for Clients by more Effectively Managing The People Side of Business...”***

***...We Achieve this through EPIC Software’s People Productivity Tools and Human Resources Products.”***

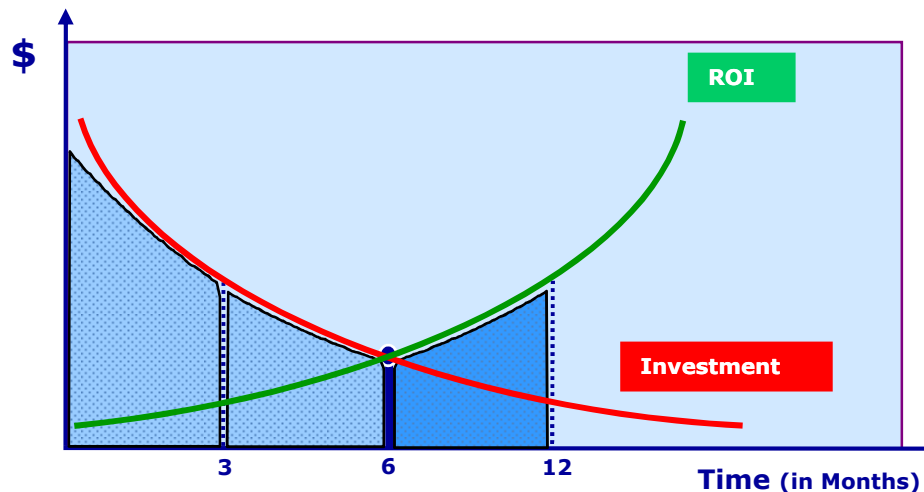


For a more detailed description of EPIC Software products, please visit our web site at: [www.epic-soft.com](http://www.epic-soft.com)

# Our Approach & Value Proposition... It's Simple

## *Business Solutions. Period.*

- ✓ Leverage our client's previous investments in technology, data and processes
- ✓ Provide fast, effective & efficient implementation
- ✓ Ensure targeted & appropriate Knowledge & Skills transfer are in place
- ✓ Flexible implementation & delivery format (i.e., Managed Services & Support)
- ✓ Flexible payment options to optimize our client's cash flow
- ✓ Fast and targeted High Return On Investment (typically less than 6-12 months)



# EPIC HRMS™ Framework...

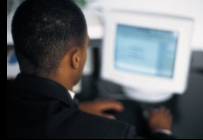
**Executives**



**Management**



**Information Technology**



**Human Resources**



**Engineering, Manufacturing & Field Service**



**Administration**



**Marketing & Sales**



**Customer Service**



Infinitely scalable, EPIC HRMS™ will grow with your organization and there is no need for additional IT resources or Capital Expenditures; our Software as a Service (SaaS) solution allows your Managers & Employees to focus on their roles and the performance and profitability of your business.



**Interviewing**

**Onboarding**

**New Employee Orientation**

**Employee Handbook**

**Job/Role Description**

**Performance Appraisals**

**Training Needs Analysis**

**Training & Development Programs**

- Unbundled, As low as \$1.00 / Employee / Month
- Managers can save 4 – 10 hours of administrative work per employee per year; for a Manager with 20 reports that saves the equivalent of 2 to 5 weeks per Manager per Year.....multiply that by the number of Managers and then by average Salary & Benefits to see how the savings add up!
- Improve the Effectiveness & Efficiency of your HR Organization by approximately 300% – 400%...

## Features of EPIC HRMS™...

***EPIC HRMS™ has been designed with unparalleled flexibility.***

- ✓ Fully web-enabled; accessible from anywhere through the Internet.
- ✓ Uses Existing Documentation; Standardizes & Automates HR Processes.
- ✓ Creates a Single System of Record for:
  - ✓ Interviewing
  - ✓ Onboarding
  - ✓ New Employee Orientation
  - ✓ Employee Handbooks
  - ✓ Performance Appraisals
  - ✓ Career Development
  - ✓ Succession Planning
  - ✓ Training
- ✓ Meets Compliance Reporting Requirements in a Single System of Record; Date & Time Stamped; Includes Multi-language Capability.
- ✓ Implemented Off-site within 2 - 8 Weeks; Typically 100% ROI within 6 Months.
- ✓ Can be integrated with an optional online catalog of over 3,000 Hours of Business and IT courses supported by a robust SCORM compliant LMS.

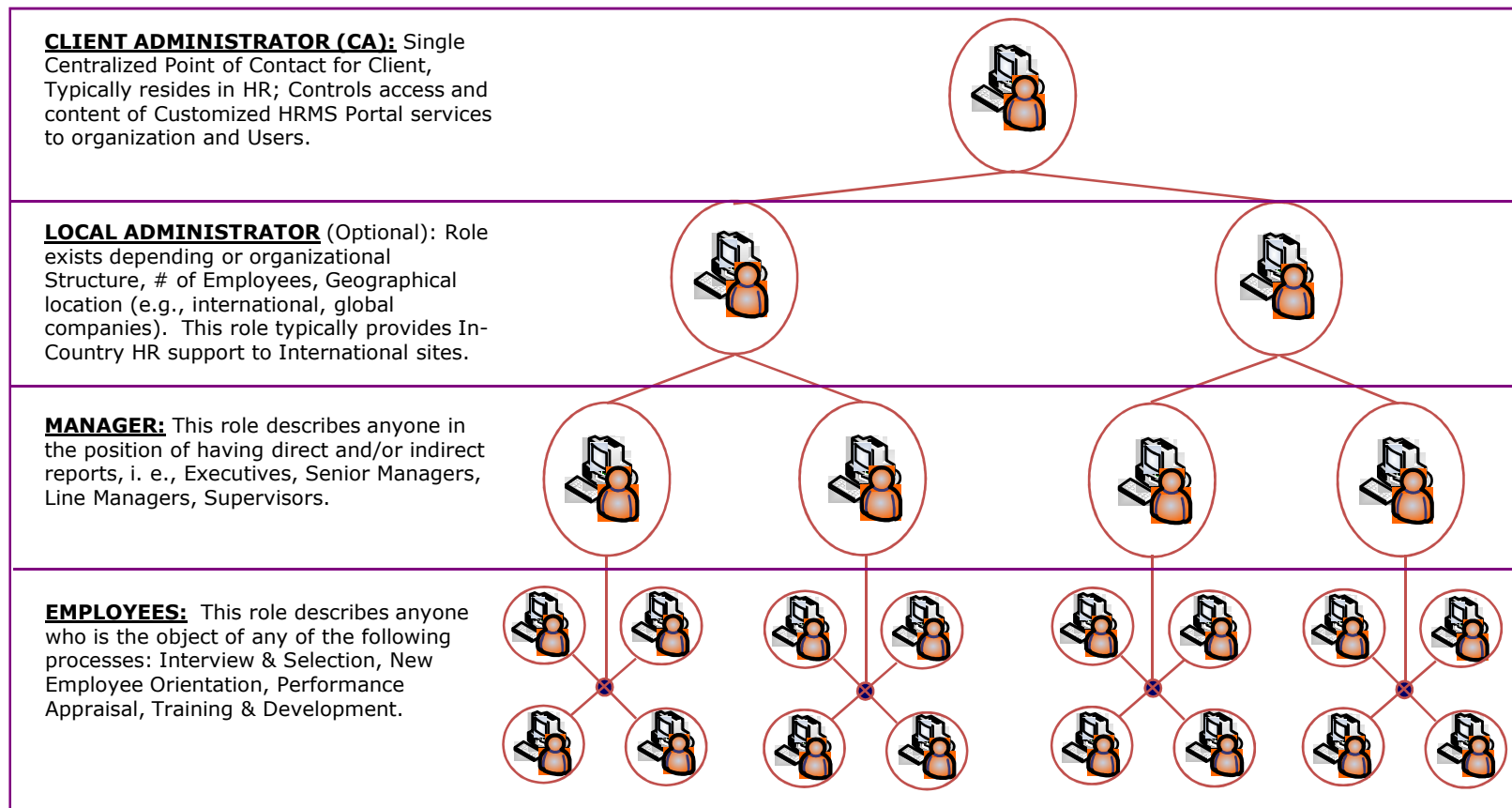
## Benefits of EPIC HRMS™...

### *Benefits Include:*

- ✓ CFO Friendly: Typically obtain a 100% ROI within 6 – 12 months
- ✓ No Capital Budget Required: No IT Hardware or Software to Buy
- ✓ No Additional Internal or 3rd Party IT Professionals Required
- ✓ Annual Licensing Fee divided into 12 equalized Monthly payments
- ✓ Implementations Completed Remotely: NO Onsite IT Consultant Expenses
- ✓ Infinitely Scalable: Easily Grows with Your Organization
- ✓ Multiple Language Capability
- ✓ Baseline Maintenance – Included
- ✓ Baseline Software Support – Included
- ✓ Baseline Technical Support – Included
- ✓ Free Upgrades – Included
- ✓ Customized Solutions built by using either our Templates or Your Existing Documentation (e.g., Job Descriptions, Performance Appraisals, Training Needs Analyses Documents)
- ✓ Fast Implementations - Be Up and Running in Days or Weeks!

# High Level EPIC HRMS™ Work Flow...

EPIC HRMS™ has been designed to minimize work flow while also addressing security regarding Employee Data and access-to-information issues. Clients designate an Administrator to act as the central point of contact. Where a client has multi-country and/or multi-site operations they typically appoint a Local Administrator. All work flow is primarily determined by reporting relationships.

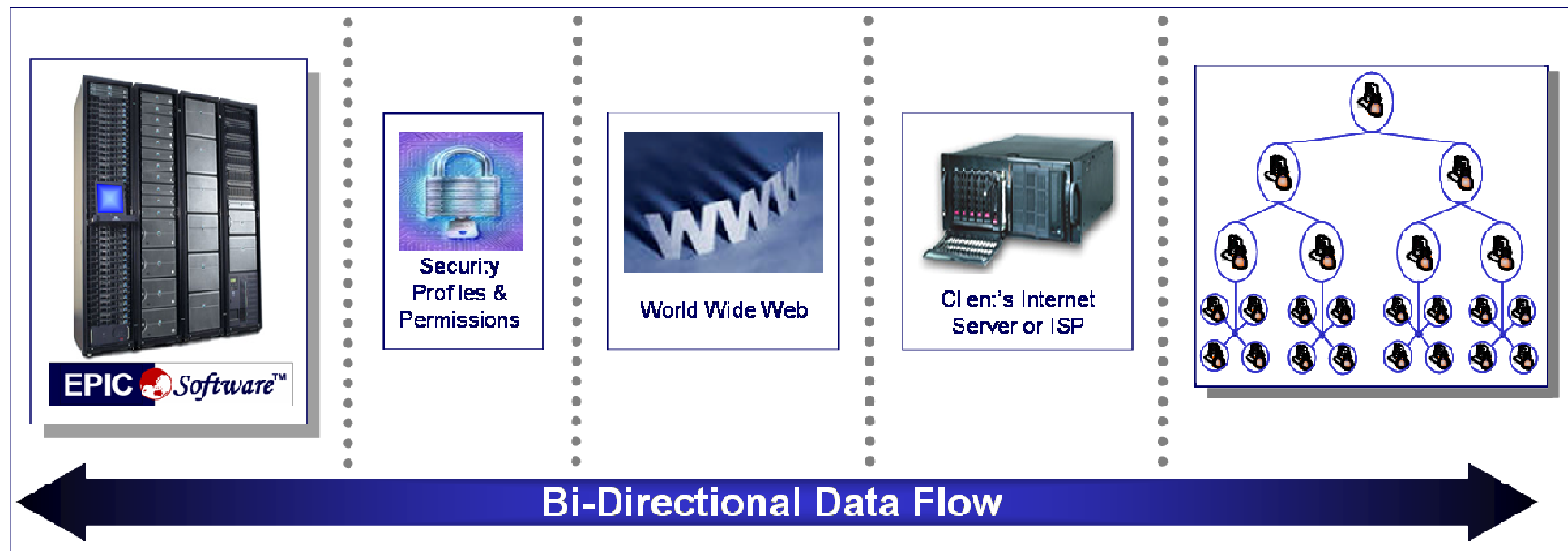




# High Level EPIC HRMS™ Architecture Overview...

EPIC HRMS™ has been designed to eliminate lengthy and costly ERP implementations and licensing fees. Our proprietary code is a thin PHP Application on top of an SQL data base. By using the internet our clients have access to EPIC HRMS™ anywhere, anytime.

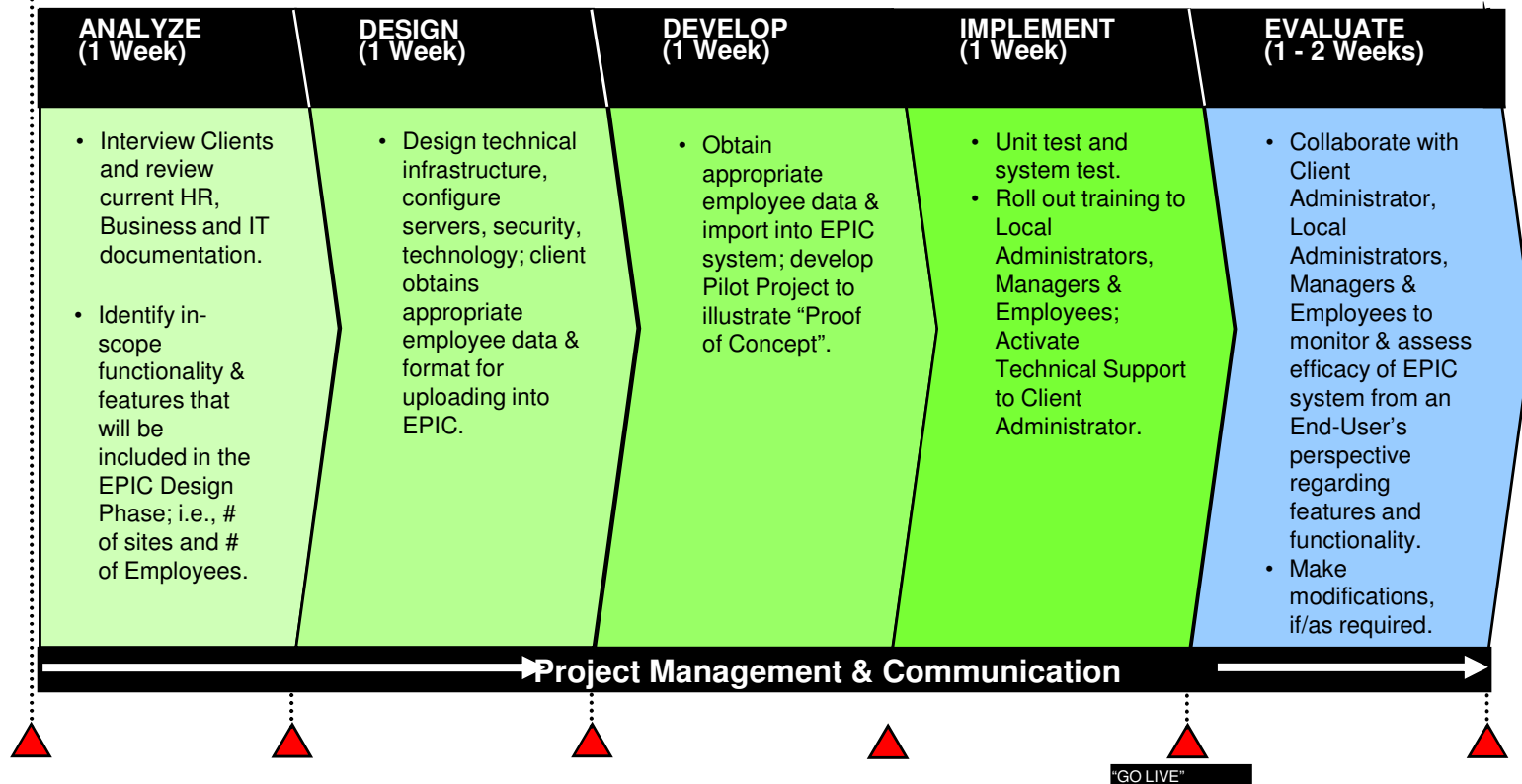
With 24/7 monitoring, regular system and data back-ups and a global telecom backbone, our state-of-the-art data center provides everything you would expect to keep your data secure and end-users up and running reliably.



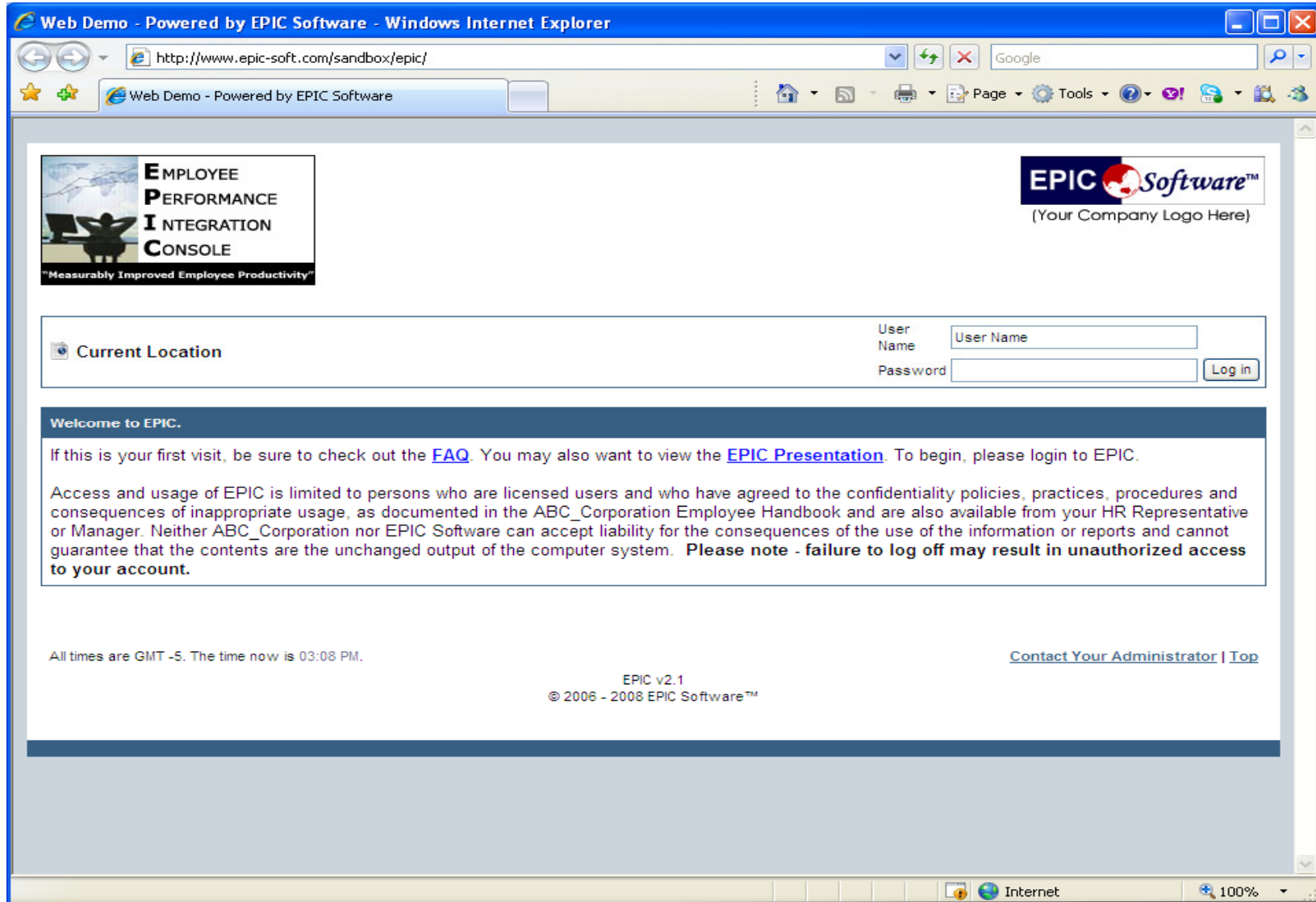
# Implementation Framework...

**EPIC HRMS™** products are completely web-based HR Life Cycle Management Systems built using Leading Practices and provides extreme ROI to organizations that are looking for a way to automate HR processes using their existing HR documentation. The process we use to create this extreme ROI results in a customized, defensible, scalable, web-enabled solution that is on “the cutting edge of common sense”...

Sales Conclude & Agreement Signed



# EPIC HRMS™ Log In Page...



# EPIC HRMS™ Main Menu - Administrator's Home Page...

Main Menu      FAQ      eLearning      Log Out

**EMPLOYEE  
PERFORMANCE  
INTEGRATION  
CONSOLE**  
"Measurably Improved Employee Productivity"

**EPIC Software™**  
(Your Company Logo Here)

Performance Appraisals    Training & Development    Employee List    Message Templates    Calendar    Administrative Control Panel    Technical Support

Current Location > System Status      Welcome, Liz Jansen.  
Main Menu      You last visited: Today at 03:15 PM

Menu : Main Menu

Document

- Interviewing
- Employee Onboarding Checklist
- Orientation
- Employee Handbook
- Job Description
- Performance Appraisals
- Training & Development
- Employee List
- Message Templates
- Calendar
- Administrative Control Panel
- Tech Support

All times are GMT -5. The time now is 03:15 PM.      [Contact Your Administrator | Top](#)

Internet      100%

# EPIC HRMS™ Main Menu - Manager's Home Page...

The screenshot displays the EPIC HRMS Manager's Home Page Main Menu. At the top, there is a navigation bar with links for "Main Menu", "FAQ", "eLearning", and "Log Out". On the left side, there is a large graphic with the text "EMPLOYEE PERFORMANCE INTEGRATION CONSOLE" and the tagline "Measurably Improved Employee Productivity". On the right side, there is the EPIC Software logo and the text "(Your Company Logo Here)". Below the navigation bar, there is a breadcrumb trail: "Current Location > System Status" and "Main Menu". On the right side of this section, there is a welcome message: "Welcome, Mark Murphy. You last visited: Today at 04:28 PM". Below this, there is a section titled "Menu : Main Menu" with a "Document" sub-section. The menu items are: "Orientation", "Employee Handbook", "Job Description", "Performance Appraisals", "Training & Development", and "My Employees". At the bottom of the page, there is a footer with the text "All times are GMT -4. The time now is 04:28 PM.", "EPIC v2.1", "© 2006 - 2008 EPIC Software™", and a link "Contact Your Administrator | Top".

# EPIC HRMS™ Main Menu - Employee's Home Page...

Main Menu      FAQ      eLearning      Log Out

**EMPLOYEE  
PERFORMANCE  
INTEGRATION  
CONSOLE**  
"Measurably Improved Employee Productivity"

**EPIC Software™**  
(Your Company Logo Here)

Current Location > System Status  
Main Menu

Welcome, David Singh.  
You last visited: Today at 03:34 PM

Menu : Main Menu

Document

- Orientation
- Employee Handbook
- Job Description
- Performance Appraisals
- Training & Development
- My Submitted Forms

All times are GMT -5. The time now is 03:35 PM.

EPIC v2.1  
© 2006 - 2008 EPIC Software™

[Contact Your Administrator | Top](#)

# Contact Information



Suite 151, 2025 Guelph Line  
Burlington, Ontario,  
Canada L7P 4X4

Direct & International: 905.634.4357  
Toll Free Messaging: 1.800.627.4151

<http://www.epic-soft.com>  
eMail: [info@epic-soft.com](mailto:info@epic-soft.com)



## North America

Liz Jansen, B.A., CHRP,  
Director - North America  
Direct: 519.938.9094  
Toll Free Messaging: 1.800.627.4151  
[liz.jansen@epic-soft.com](mailto:liz.jansen@epic-soft.com)



## UK & EU

William Connelly, B.Sc., MBA  
VP Sales - United Kingdom  
Mobile: (+44) 0771 053 5299  
Toll Free Messaging: 1.800.627.4151  
[bill.connelly@epic-soft.com](mailto:bill.connelly@epic-soft.com)